

alcarol

Catalogue _2018



alcarol is conceived by Andrea Forti & Eleonora Dal Farra, an experimental design duo that researches and focuses on the story and intrinsic features of the environment and physical substances, combining handed-down experience of raw materials processing with avant-garde and innovative techniques.

All environmental traces on the materials are thoroughly studied to discover a specific Genius Loci.

In classical mythology, the Latin term Genius Loci refers to a protective spirit attached to a place, a guardian who watches over its part of the world and imbues it with a special character.

In a modern context, alcarol seek to identify the spirit and the essence of a space to obtain an unordinary understanding.

alcarol is located halfway between the Venice Lagoon and the nearby Dolomite Unesco World Heritage mountains, and its pieces aim to capture some unusual atmospheres of these unique places, often by freezing time at the end of the material's life cycle, thereby giving it a new life.

To this end, alcarol employs experimental processes with invisible or transparent substances to preserve natural materials exactly as they appear in their original habitat, and making them functional as unique design pieces.

The subsequent sectioning of the physical substances allows for an appreciation of their intimate and profound natures, introducing the fundamental idea of environmental cross-section.

The section planes – through touch, sight and olfaction of different materials – allow to transcend the ordinary perception of a place.



BRICOLA

COLLECTION

"An object, after all, is what
makes infinity private."

Iosif Brodskij, Watermark

Adopting the concept of re-utilisation, the Bricola Collection is created with a view to the aesthetic value of the timber of the historic Venetian poles that have endured decades of weathering in this unique worldwide Lagoon. During their stay in the water, these oak logs are deeply sculpted by *Teredo Navalis*, shipworms that leaves traces of their passing on the wooden surface producing striking patterns of circular holes, whilst avoiding the inner core of the log, allowing it to maintain its health and strength. This creates a beautiful contrast between outer decay and inner robustness. The assiduous labour of the elements necessitates the replacement and scrapping of the poles, providing an organic material that has traversed by life.

For the making of, alcarol dove into the waters of the Venetian canals and studied the characteristic environment in which these poles were forged. The project engages with the idea of submerged cross-section of this extraordinary setting. alcarol has patented an elaborate and patient craftsmanship capable of filling only the empty spaces of the wood with an innovative transparent resin and capturing the underwater air bubbles that bring the wood back to the original look and conditions. By filling the gaps left by shipworms with resin, alcarol achieves a new functionality with the poetic choice to bring the material beneath the water's surface, freezing time at the end of its cycle and giving it a new life before it goes to waste.

In spite of everything, Venice continues its fight against the muddy ground and ever increasing water levels. The foundations of Venice consist of thousands of timber poles, driven into the lagoon's *caranto* layer - a mixture of solid clay and sand situated at great depths. These unique design pieces - which are sculpted by water, salt, shipworms and time - are a tribute to this epic submarine struggle that has transcended millennia.

The *Bricole's* external surface is left intentionally intact, as reminder of the Venetian sojourn of this characteristic recovered timber. All parts sawn from bricola poles undergo accurate and painstaking washing, cleaning, drying and disinfection procedures.

This collection is the result of a long experimentation period on the coupling of Bricola solid wood and transparent resin. This long process has allowed alcarol to propose pieces with natural solid oak not covered by resin on the section plane. Natural solid wood and transparent polished resin differ from one another at touch and sight and together they give essential characteristics: warmth and porosity from natural wood, elegance and transparency from the resin.



CHIMENTI_ Table



In Venetian seafaring language, the '*chimenti*' are the gaps between the boards forming a ship's planking. Waterproofing of the ship's structure take place at the hand of master caulkers who, using a mallet, stuff the gaps with oakum soaked in tar and colofonia, a transparent vegetable resin. Not unlike the work of master caulkers, who seal the *chimenti* in order to render the ship's structure functional, the manufacture of this table entails a modern sealing process to make the table-top functional.



The old craft is rendered - through a modern key - into the elaborate and patient craftsmanship of filling the empty spaces with a present-day resin which looks like water and has glass consistency, able among other things to bring the edge of the planks back to the original look and conditions of the submerged *bricola*, washed by the Laguna's water, and thus transforming the table top in a kind of subaqueous section of Venetian *bricolas*, suitably functional and highly poetic.

The Chimenti table is made of three Venetian *Bricola* planks with natural edges, obtained by plainsawn and then submerged in a special mould filled with resin.

An elaborate and patient craftsmanship is used to ensure that, by the time the resin has completely set, it has been pushed into all air pockets and all slots between planks.

Chimenti intends to maximise the value of such interstitial spaces which bear the history of this exclusive timber, corroded by salt on its surface and sculpted by *Teredo Navalis*.

Dimensions:

100 x 220 h. 75 cm

Wide customization opportunities

Materials and finishes:

Bricola solid oak wood, epoxy resin, burnished steel legs.





The Chimenti base, simple and respectful of its historical baggage, is made of two steel sheet tapes, the same as those used in the Lagoon to join the *bricolas* together. This geometry also allows the eye and the light to travel through every single chimento without being hindered by structural interruptions, thus preserving the pure poetic feeling of threshold, passage and glimmer.

CHIMENTI_ Round Table



The round Chimenti table is a variation of Chimenti, it's made of five Venetian bricola planks with natural edges, obtained by plainsawn and then submerged in a special mould filled with resin. An elaborate and patient craftsmanship is used to ensure that, by the time the resin has completely set, it has been pushed into all air pockets and all slots between planks. Chimenti intends to maximise the value of such interstitial spaces which bear the history of this exclusive timber, corroded by salt on its surface and sculpted by *Teredo Navalis*.





Dimensions:
Ø 165 h. 75 cm

Wide customization opportunities

Materials and finishes:
Bricola solid oak wood, epoxy resin, burnished steel.

BENT_Desk



Dimensions:
200 x 90 h. 75 cm

*Wide customization
opportunities*

Materials and finishes:
Bricola solid oak wood,
epoxy resin.



BENT_ Bench



The Bent Bench is made from a single resined wood plank cut into three parts with a very thin blade.

In the corners the wood matches perfectly and looks like a single bent piece, also the resin in the corners - through a special process - is a single piece and not seen separations between the horizontal and the vertical resin edges:

the three wood/resin pieces are inseparably welded in a single piece. This technical solution is also suitable for consoles, small / medium tables and other similar types.



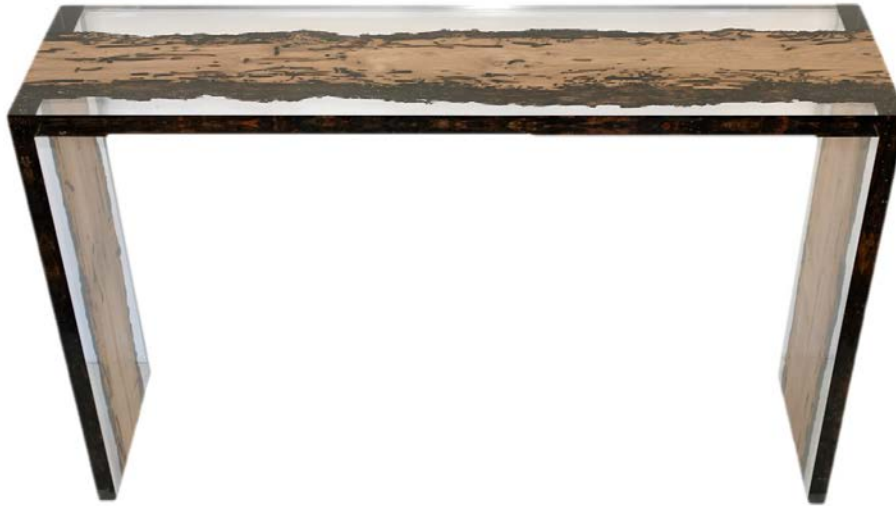
Dimensions:
160 x 35 h. 45 cm

*Wide customization
opportunities*

Materials and finishes:
Bricola solid oak wood,
epoxy resin.



BENT_Console



Dimensions:
135 x 35 h. 85 cm

Wide customization opportunities

Materials and finishes:
Bricola solid oak wood, epoxy resin.

BENT RIVER_ Console



Dimensions:
135 x 35 x h. 85 cm

Wide customization opportunities

Materials and finishes:
Bricola solid oak wood, epoxy resin,

CANAL_ Console

In Venice, each canal has unique characteristics, over the centuries, man and elements have defined its aspect. Walking through the alleys, changing perspective or waiting for a change in the rays of the sun, this millennial environment takes different expressions.

Canal want to reproduce this experience: an integrated sensor detects the passage of people and activates a light source hidden inside the structure, so the light reaches the aquamarine resin and gives us the thrill of a ray of sunlight filtered through the lagoon waters.



Dimensions:

135 x 40 h. 95 cm

Wide customization opportunities

Materials and finishes:

Bricola solid oak wood, epoxy resin, burnished steel, proximity sensor switch, Integrated LED system.

FOGGY_ Coffee Table

"At break of day stars fade with envy seeing the charms of Venice emerge from the fog"

*Mieczyslaw Kozlowski,
Le Maschere di Venezia.*

The wood of Venice, immersed in a transparent volume with a satin whitish backdrop, seems to emerge from the fog of the canal revealing his intimate and secret beauty.



Dimensions:
50 x 100 h. 40 cm

Wide customization opportunities

Materials and finishes:
Bricola solid oak wood, epoxy resin, burnished steel.

JETTY_ Coffee Table



Jetty is a meeting place, it is a surface area of transition between liquid and solid. A floating space where wood and water are spoken, whispering incessantly, like waves raised by the boats that dock.

Dimensions:
75 x 75 h. 40 cm

Wide customization opportunities

Materials and finishes:
Bricola solid oak wood, epoxy resin, burnished steel.



ANCHOR_ Stool/side table

Venice foundations consist of thousands of timber poles, driven into the lagoon till they reach the 'caranto' layer (a mixture of solid clay and sand situated at great depths). Being surrounded by salty mud, the wood has turned to stone.

In spite of everything Venice is still fighting against the muddy ground and the ever increasing water level. Anchor is a tribute to this millennial struggle, to the memory of these epic underwater atlases. It is a stool obtained from a slice of Venetian palina, dried and cemented using a transparent glass-like resin that incorporates and protects the precious jagged natural edge.



Dimensions:

30 x 30 h. 45 cm

Wide customization opportunities

Materials and finishes:

Bricola solid oak wood, epoxy resin, swivel castors.

FISHEYE_ Stool/side table



Adopting the concept of re-utilisation, FishEye is created with a view to the aesthetic value of the timber of the historical poles that have endured decades of weathering in the canals of Venice. During their stay in the Laguna, these oak logs are deeply sculpted by Teredo Navalis, shipworms that leaves traces of their passing on the wooden surface producing striking patterns of circular holes, whilst avoiding the inner core of the log, allowing it to maintain its health and strength. This creates a beautiful contrast between outer decay and inner robustness.

Dimensions:
Ø 37 h. 45 cm

Wide customization opportunities

Materials and finishes:
Bricola solid oak wood, epoxy resin, swivel castors.



The assiduous labour of the elements necessitates the replacement and scrapping of the poles, providing an organic material that has traversed by life. For the making of FishEye, alcarol dove into the waters of the canals of Venice and studied the characteristic environment in which these poles were forged. The project engages with the idea of submerged cross-section of this extraordinary setting. alcarol has patented an elaborate and patient craftsmanship capable of filling only the empty spaces of the wood with a transparent resin and capturing the underwater air bubbles that bring the wood back to the original look and conditions. By filling the gaps left by shipworms with resin, alcarol achieves a new functionality with the poetic choice to bring the material beneath the water's surface, freezing time at the end of its cycle and giving it a new life before it goes to waste.



SURFACING FISHEYE_ Stool/Side Table



Dimensions:
Ø 37 h. 45 cm

Wide customization opportunities

Materials and finishes:
Bricola solid oak wood, epoxy resin, swivel
castors.



MAREALE_ Stool



Dimensions:

Ø 37 h. 50 - 70 cm

Wide customization opportunities

Materials and finishes:

Bricola solid oak wood, epoxy resin, burnished steel.



Mareale is a stool with adjustable height made from a slice of Venetian pole surrounded by a special transparent resin that encompasses and protects the precious and jagged edge carved from natural lagoon shipworm. As the excursion of the tide rises and lowers so the stool has a tidal height variable to suit all needs. This movement is guaranteed by a base with a massive oxidized steel screw.

BURANO_ Plate



Burano is an island in the Lagoon of Venice, famous for its lace.

In this plate is used a section of "bricola", the traditional timber pole planted in the Lagoon seabed, characterized by the tunnels carved by the molluscs that create a pattern of solids and voids like a lace. This wooden crochet is surrounded by a sheet of transparent aquamarine resin liven up by a constellation of air bubbles that returns a fragment of submerged Venice.

Dimensions:

Ø 32 - 36 - 40 cm

Materials and finishes:

Bricola solid oak wood, epoxy resin.

SUSANNA_ Lazy susan



Susanna is an imaginary island created with a section of "Bricola" immersed into a volume of aquamarine resin.

The surface of that island is modulated by full and empty and its jagged edges are animated by a myriad of bubbles, froth flow from the sea.

Pressing invisible rotating mechanism is possible to circumnavigate the coast of Susanna moving just one finger.

Dimensions:

Ø 55 - 45 - 40 cm

Materials and finishes:

Bricola solid oak wood, epoxy resin, swivel mechanism made of transparent polycarbonate and steel balls.

ABYSS_Lamp

Dimensions:

12 x 12 h. 25 cm

15 x 15 h. 30 cm

19 x 19 h. 37 cm

Materials and finishes:

Bricola solid oak wood, epoxy resin, burnished steel, Dimmer metal touch switch, Integrated LED system.



Abyss is a real immersion in a Venetian canal. Touching the base you can see the scene with different light intensities, variables such as the weather and the sun in the historic lagoon city.

WATER BRIGHT_ Lamp



Dimensions:

11 x 4 h. 25 cm

Materials and finishes:

Bricola solid oak wood, epoxy resin, burnished steel, Dimmer metal touch switch, Integrated LED system.



Water Bright is a fragment, a synthesis of the millennial relationship between wood and water.

It 's the story of the profound and romantic rapport that develops between these two elements in Venice. The light of variable intensity reveals the poetry of this union and refers to the lagoon atmosphere.



PEATLAND
COLLECTION

Alcarol recovered some unusual black trunks of Oak trees lain in a small Alpine peat. The radiocarbon dating has revealed their age: the fifth century before Christ.

Peatland is a wet area that accumulates deposit of dead plant material where the water at the ground surface is acidic, anaerobic and low in nutrients.

Deprived of oxygen, the buried wood undergoes the process of fossilization. The peat protect the wood from normal decay, while the underlying peat with iron salts and other minerals react with the tannins in the wood, gradually giving it a distinct dark brown to almost black color.

This millennia-long process also increase its hardness to such a level that it can only be carved with the use of special cutting tools.

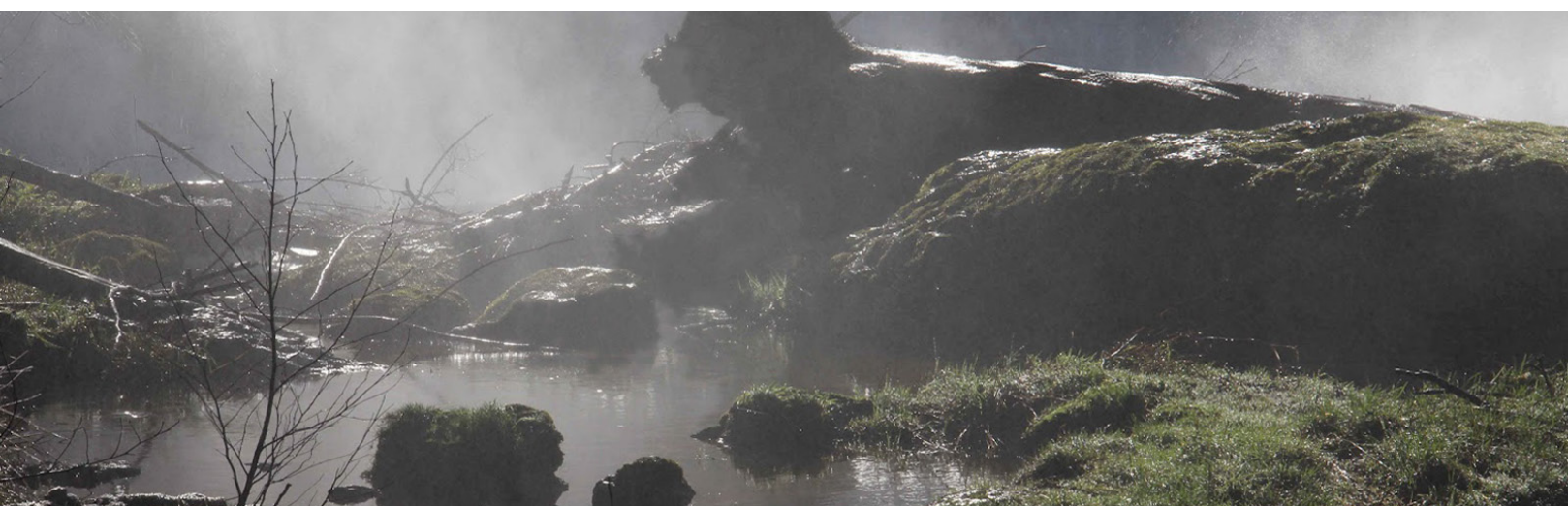
Sites of quality peat wood in the world are very rare and saving the wood for further processing is a very delicate matter.

The process of wood desiccation is very complex, and despite great care, most of the raw wood is unsuitable for further processing.

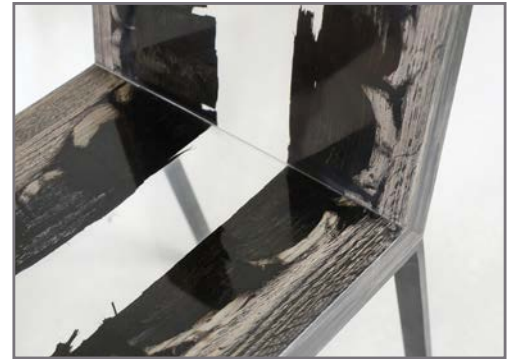
Alcarol selects the most suitable trunks and cut the pieces preserving the natural eroded outer surface.

Then alcarol uses its innovative resin process to emphasize this precious wood with transparent resin volumes resembling the water that has conserved them for millennia.

The natural wood surface it's not covered by resin on the section planes, so you can touch the warm organic vibrancy of such an ancient material.



PEATLAND_Chair



Dimensions:

37 x 45 x H 80 cm/ Custom Sizes Available

Materials and finishes:

Peat Oak Wood 5th century b.C
(radiocarbon dating) ,Extraclear
Resin,Burnished STEEL Base.

*Natural Wood surface not covered by resin on
the section planes.*

PEATLAND_ Console



Dimensions:

135 x 35 x H 90 cm /Custom Sizes Available

Materials and finishes:

Peat Oak Wood 5th sec b.C (radiocarbon dating) ,
Extraclear Resin.

*Natural Wood surface not covered by resin on the
section planes.*



PEATLAND_Bench/low table



Dimensions:
Custom Sizes Available

Materials and finishes:
Peat Oak Wood 5th sec
b.C (radiocarbon dating) ,
Extraclear Resin.
*Natural Wood surface not
covered by resin on the
section planes.*



PEATLAND_Stool/side table



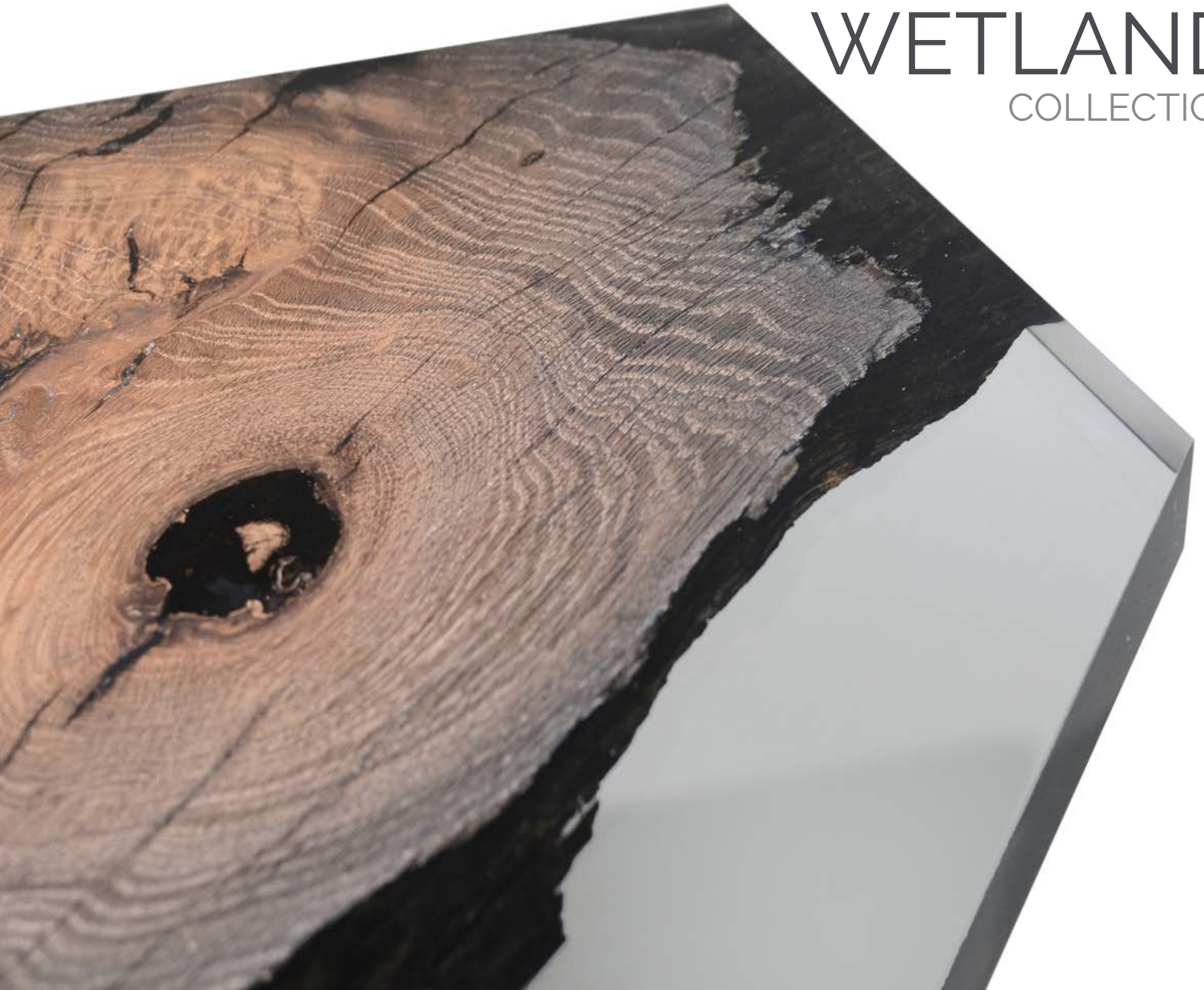
Dimensions:
Custom Sizes Available

Materials and finishes:
Peat Oak Wood 5th sec
b.C (radiocarbon dating) ,
Extraclear Resin.
*Natural Wood surface not
covered by resin on the
section planes.*



WETLAND

COLLECTION



A wetland is an ecosystem that is saturated with water, which in some cases preserves materials such as wood for millennia. Abonos is a Celtic name which indicates the "fossil" wetland wood type of some rare alluvial areas of the Alps, where minerals and water have started the semi-fossilization process of the submerged trees. Despite its ancient origin, this precious material has been only recently rediscovered and studied.

Abonos™ is unique because, although it is the result of an underwater deposit, it manages to maintain its properties and at the same time increases its hardness, acquiring at the same time a distinctive and extremely fascinating appearance.

We can find its deposits in some areas of the Alps, often subject to large-scale floodings. The trees, dragged and deposited in the riverbed by the force of the water, are buried by layers of gravel and sand. The long-time storage under low oxygen levels has started a genuine semi-fossilization process, still influenced by the substances present in the water. Currents bind the minerals and iron in the water with tannins in the wood, naturally colouring the wood in the process. This gives Abonos its uniqueness: the colours of a trunk can change from golden to black and the veining can create drawings through the chromatic scales. The color will create warm shades in contact with clay, cold ones in contact with gravel.

The tendency of wood to become darker indicates the increasing age of the trunks, as a matter of fact the black ones are the oldest. Some of them have more than 8000 years, others have hundreds years. Each of these trunks is different from the other and so it is impossible to find two of them with the same shades. These features of the color give a strong visual impact, that even without a scientific analysis, a watchful eye could easily understand the history of the trunk.

Sites of quality Abonos wood in the world are very rare and saving the wood for further processing is a very delicate matter. In order to extract the trunks from the bottom, usually divers explore the area, they fasten them to the ropes and lift the trunk up to the surface through the presence of balloons filled with oxygen. The quality of this material does not derive from its uniqueness, antiquity, incomparability, but also from the attention towards the land and the material itself. This method of extraction, allowing to preserve the environment, avoids to damage the wooden structure during the operation. The millennia-long process increases Abonos hardness to such a level that it can only be carved with special cutting tools.

Also the process of wood desiccation is very complex, and despite great care, most of the raw wood is unsuitable for further processing. Understanding the process of conservation and manufacturing of this wood easily transmits the observer its value, rarity and importance. Each trunk is not only material for works of the highest attention and quality, but also the stunning result of the unique conditions that have created it over the millennia and a piece of history of the area from which it was taken.



WETLAND_Table



Dimensions:

330 x 130 x H. 75 cm / Custom Sizes Available

Materials and finishes:

*Abonos OAK Wood, Extraclear Polished RESIN,
Burnished STEEL Base.*

*Natural Wood surface not covered by resin on the
section planes.*



WETLAND_ Console



Dimensions:

160 x 40 x H 85 cm / Custom Sizes Available

Materials and finishes:

Abonos Oak Wood 5th sec b.C (radiocarbon dating)
, Extraclear Resin.

*Natural Wood surface not covered by resin on the
section planes.*



WETLAND RELIC_ Console



Dimensions:

40 x 155 x H 85 cm / Custom Sizes Available

Materials and finishes:

*Abonos OAK Wood, Extraclear Polished RESIN,
Burnished STEEL Base.*

*Natural Wood surface not covered by resin on the
section planes.*



WETLAND FRAGMENT_ Console



Dimensions:

48 x 94 x H 85 cm / Custom Sizes Available

Materials and finishes:

*Abonos OAK Wood, Extraclear Polished RESIN,
Burnished STEEL Base.*

*Natural Wood surface not covered by resin on the
section planes.*

WETLAND_Side Table



Dimensions:

50 x 72 x H 45 cm / Custom Sizes Available

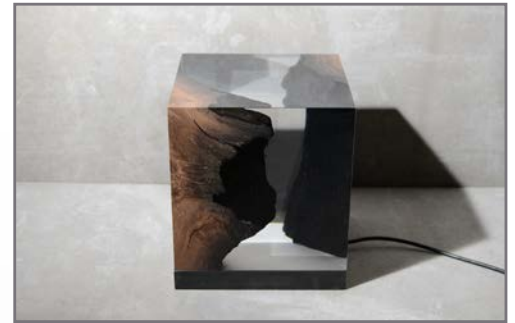
Materials and finishes:

*Abonos OAK Wood, Extraclear Polished RESIN,
Burnished STEEL Base.*

*Natural Wood surface not covered by resin on the
section planes.*



WETLAND_Lamp



Dimensions:

23 x 23 x H 26 cm / Custom Sizes Available

Materials and finishes:

Abonos Oak Wood 5th sec b.C (radiocarbon dating)
, Extraclear Resin, burnished steel, Dimmer metal
touch switch, Integrated LED system.

*Natural Wood surface not covered by resin on the
section planes.*





FUNGI

COLLECTION

"In Nature nothing is lost, nothing is
created, everything is transformed"

Antoine-Laurent de Lavoisier

Forests are the dominant terrestrial ecosystem. Their biomass is the oldest source of renewable energy used since our ancestors learned the secret of fire. Much of this biomass occurs below ground as partially decomposed plant detritus. Its decay is a clear example of the transformative energy of Nature, and it's all around us. The final stages in the life cycle of a forest tree attracts specialised fungi organisms which attack the wood breaking down the tough lignin layer that protects it.

Fungi are in the air. They just await the opportunity to take advantage of the right conditions to grow and transform the organic matter. Fungi doesn't always grow when a tree dies and neither does it always strike all specie of tree equally either, any chance during the winter months fungi become inactive until the next spring. With the ice melting they begin to operate again using the water and the humidity of the undergrowth.

alcarol walks in the Italian Dolomite forests selecting dead trees and abandoned logs with their native populations of fungi, and cut planks preserving their natural live edges. One of the outstanding effects of the early stages of wood decay is the fungi texture inside the matter of the tree: the fungal growth can create some of the most dramatic and beautiful wood color changes with regions of discoloration and intricate patterns of amazing dark lines, adding a new dimension to the woodgrain.

Maybe the most fascinating creations of the fungi are the mapping dark lines, that look like free-form art drawn with a calligraphy pen. These zone lines are pigment demarcations constructed by the fungal colonies to protect their territories from potential competitor fungi.

alcarol main action is sectioning, and when the saw has finished his work our eyes can see the hidden world of Nature, sometimes simply amazing. The section planes – through touch, sight and olfaction – allow you to transcend the ordinary perception of a place, discovering the intimate transformative wonder of Nature.

With an aim to capture the fungal metamorphic instant by freezing time at the end of the tree's life cycle, alcarol employs experimental processes to preserve the raw material exactly as it appear in his original habitat. And the innovative operations are combined with traditional woodworking techniques.

The natural wood live edges are frozen in a special extraclear resin resembling the winter ice that blocked the fungal activity. The transient beauty of Nature becomes eternal.



FUNGI_ Dining table limited edition



The Fungi Table is made of a single wood plank obtained from a very large Beech log with its populations of fungi, recovered in the Italian Dolomite forest. The plank is cut into two parts with a very thin blade and then joined so that in the corners the fungal woodgrain matches perfectly like a single bent piece, and also the resin – through a special process – is a single piece and not seen separations between horizontal and vertical resin edges. The invisible corner joining by alcarol is also suitable for low tables, benches, consoles and other similar types on request. The natural wood live edges are frozen in a special extraclear resin resembling the winter ice that blocked the fungal activity. The transient beauty of Nature becomes eternal.



Dimensions:

Custom Sizes Available

Materials and finishes:

Beech WOOD with FUNGI texture, extraclear polished RESIN, burnished STEEL leg.

Natural Wood surface not covered by resin on the section planes. alcarol's patented process with selective wood coating, waterborne matt finish with natural wood effect.

FUNGI_ Dining table 2 planks



Dimensions:
Custom Sizes
Available

Materials and finishes:
Beech WOOD with FUNGI texture,
extraclear polished RESIN, burnished STEEL leg.

FUNGI_Console

The Fungi Console is made of a single wood plank obtained from an abandoned Beech log with its native populations of fungi, recovered in the Italian Dolomite forest.

The plank is cut into two parts with a very thin blade and then joined so that in the corners the fungal woodgrain matches perfectly like a single bent piece, and also the resin – through a special process – is a single piece and not seen separations between horizontal and vertical resin edges.

The console shows the most fascinating creations of the fungi: wood discolorations and intricate dark lines that look like free-form art drawn with a calligraphy pen, pigment demarcations constructed by the fungal colonies to protect their territories from potential competitor fungi.

The natural wood live edges are frozen in a special extraclear resin resembling the winter ice that blocked the fungal activity, giving it a new life before it goes to waste.



The natural wood live edges are frozen in a special extraclear resin resembling the winter ice that blocked the fungal activity, giving it a new life before it goes to waste.



Dimensions:

Custom Sizes Available

Materials and finishes:

Beech WOOD with FUNGI texture,
extraclear polished RESIN,
burnished STEEL leg.

*Natural Wood surface not covered
by resin on the section planes.
alcarol's patented process with se-
lective wood coating, waterborne
matt finish with natural wood ef-
fect.*



FUNGI_ Stool/side table



Dimensions:

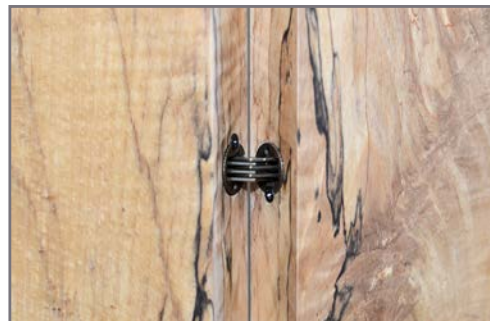
30 x 30 h. 45 cm *Wide customization opportunities*

Materials and finishes:

Beech WOOD with FUNGI texture, extraclear polished RESIN, Swivel CASTORS or FELT hidden at the bottom.
Natural Wood surface not covered by resin on the section planes. alcarol's patented process with selective wood coating, waterborne matt finish with natural wood effect.

The Fungi Stool is a block of wood obtained from a dead Apple tree with its native populations of fungi, inside and outside the log. The final stages in the life cycle of a tree attracts specialised fungi organisms which attack the wood breaking down the tough lignin layer that protects it. The section planes – through touch, sight and olfaction – allow you to transcend the ordinary perception of a place, discovering the intimate transformative wonder of Nature.

FUNGI_Screen



The Fungi Screen is made of four wood boards obtained by sawing dead Beech trees with their native populations of fungal colonies, recovered in the Italian Dolomite forest. The vertical arrangement seems to evoke the original forest trees, according to the idea of environmental cross-section of this extraordinary setting, and with the aim to transcend its ordinary perception.

The screen shows one of the outstanding effects of the early stages of wood decay: the fungal growth can create some of the most dramatic and beautiful wood color changes with regions of discoloration and intricate patterns of amazing dark lines, adding a new dimension to the woodgrain.

Dimensions:

Custom Sizes Available

Materials and finishes:

Beech WOOD with FUNGI texture, extraclear polished RESIN, burnished STEEL leg.



UNDERGROWTH
COLLECTION

MOSS TABLE_2



Dimensions:
240 x 100 x H 75 cm

Wide customization opportunities

Materials and finishes:
Solid wood, mosses,
transparent resin,
burnished STEEL legs.

MOSS TABLE_3



Dimensions:
300 x 100 x H 75 cm

Wide customization opportunities

Materials and finishes:
Solid wood, mosses, transparent resin, burnished STEEL legs.



MOSS TABLE_ Limited edition

alcarol recovered some logs from the undergrowth of the Italian Dolomite mountains and cut planks that preserve the natural edges with their native populations of mosses, which are embedded in a resin resembling the water that generated their life.

The Moss Table_ limited edition is made from a single wood plank with live mossy edges. It's a walk through the forest, a path to immerse in the fresh sensations of the greenery that animate the woods.

Dimensions:

230 x 90 x H 75 cm

Wide customization opportunities

Materials and finishes:

Solid wood, mosses, transparent resin, burnished STEEL legs.



TRAIL_ Console

Mosses and lichens are very primitive organisms that form the lowest layer of forest vegetation and are equipped with chlorophyll giving them a green colour of varying degrees of intensity.

alcarol recovered some logs from the undergrowth of the Italian Dolomite mountains and cut planks that preserve the natural edges with their native populations of mosses, which are embedded in a resin resembling the water that generated their life. The Trail Console is made from a single wood plank, cut into three parts with a very thin blade.

In the corners, the wood matches perfectly and looks like a single bent piece, and also the resin – through a special process – is a single piece and not seen separations between horizontal and vertical resin edges. Trail Console is a walk through the forest, it's a path to immerse in the fresh sensations of the greenery that animate the woods.



Dimensions:
150 x 40 h. 90 cm

Wide customization opportunities

Materials and finishes:
Solid wood, mosses, transparent resin.

TRAIL_ Bench



Dimensions:
150 x 40 h. 90 cm
Wide customization
opportunities

Materials and finishes:
Solid wood, mosses,
transparent resin.

TRAIL_ Coffee Table



Dimensions:

145 x 60 h. 30 cm

120 x 75 h. 45 cm

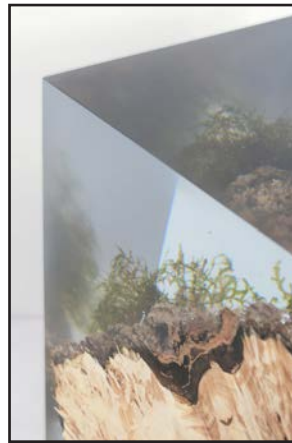
Wide customization opportunities

Materials and finishes:

Solid wood, mosses, transparent resin.

STUMP_ Stool/side

Some parts of the tree – dense with knots and defects – are not suitable for sawmills and then are discarded or left to rot in the woods. These pieces are very organic, full of life, and authentically reflect the real nature of their habitat. The project engages with the alcarol concept of the environmental cross-section. By filling the gaps with resin, alcarol achieves a new functionality with the poetic choice to freeze time at the end of the material cycle and giving it a new life before it goes to waste.



Dimensions:
30 x 30 h. 45 cm

Wide customization opportunities

Materials and finishes:
Solid wood, mosses,
transparent resin, swivel
castors.

MOSS_Lamp



Dimensions:

23 x 23 x H 30 cm / Custom Sizes Available

Materials and finishes:

Solid wood, mosses, transparent resin, burnished steel, Dimmer metal touch switch, Integrated LED system.

Natural Wood surface not covered by resin on the section planes.



WOODPILE_ Shelving

Mosses and lichens are very primitive organisms that grow in damp places, including rocks and trees. They form the lowest layer of forest vegetation and are equipped with chlorophyll giving them a green colour of varying degrees of intensity. alcarol recovered some logs from the undergrowth of the Italian Dolomite mountains and cut planks that preserve the natural edges with their native populations of plants, which are embedded in a resin resembling the water that generated their life.





Dimensions:
190 x 40 h. 90 cm

Wide customization opportunities

Materials and finishes:
Oak solid wood, mosses,
transparent resin, burnished
steel.

This bookshelf is a self-supporting structure looking for utmost essentiality, giving the sections of the mossy log the effect of being suspended in the air. With its apparently precarious balance, it is a refined dispute between visual instability and actual stability. It is a dizzying challenge to the force of gravity, the expression of a profound aspiration to a transparent, metaphysical lightness, as trees blowing in the breeze. The structure is reduced to a minimum: three slender steel rods passing through and supporting the shelves. Embedded in the wood is a hidden mechanism that locks into place the pieces of the vertical metal rod – giving them the appearance of a single rod – and providing stability to the structure. The assembly is incredibly simple and without use of tools, according to the minimalist nature of this piece.

CREEK _ Table



Dimensions:

280 x 100 x H 75 cm / Custom
Sizes Available

Materials and finishes:

Solid WOOD, Extraclear Polished
RESIN, Burnished STEEL Legs.



CREEK _ Bench



Dimensions:

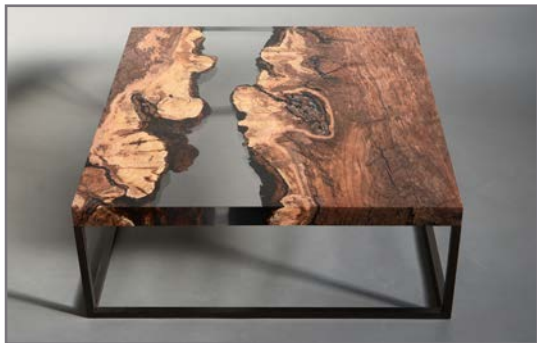
280 x 100 x H 75 cm / Custom
Sizes Available

Materials and finishes:

Solid WOOD, Extraclear Polished
RESIN, Burnished STEEL Legs.



CREEK_ Low table



Dimensions:

89 x 90 x H. 30 cm

Materials and finishes:

Solid WOOD, Extraclear
Polished RESIN, Burnished STEEL
Legs. Natural Wood surface not
covered by resin on the section
planes.



CREEK_console



Dimensions:

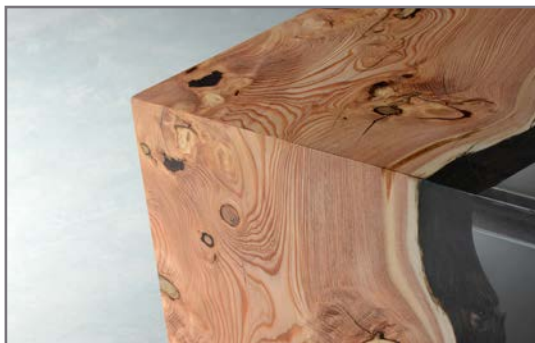
170 x 40 h. 80 cm

Wide customization opportunities

Materials and finishes:

*Solid WOOD , Extraclear RESIN.
Natural Wood surface not
covered by resin on the section*

CREEK_ Coffee Table



Dimensions:

80 x 160 x H40 cm / Custom Sizes Available

Materials and finishes:

Solid WOOD , Extraclear RESIN.
Natural Wood surface not covered by resin on the section



PHELLEM

COLLECTION

"Anything becomes interesting
when you look at it closely."

Eugenio d'Ors



Phellem is the outermost layer of the tree bark, similar in many ways to our own skin. Although quite conspicuous and essential for the protection of the tree, bark has been much less studied and used than wood.

This collection treatise on its incredibly fascinating biodiversity offering any range of colors and the most unimaginable textures.

The casual stroller will see all the tree trunks as similar, often dull, monotonous and without any special charm, but the bark of a tree is as individual as a fingerprint and its polymorphism – variety in pattern and color – is simply stunning.

These skins are strongly characterized and made different by genetics of each individual wood species as well as the environment and the organisms grew up in it. The bark of different trees has evolved to make best use of the habitat in which each species occurs, the main function is always to protect the arboreal body keeping the vital layers away from temperature and external stress.

When bark is damaged a natural defense mechanism intervenes, a complex liquid substance hardens in contact with air creating a sort of conservative barrier keeping the vital wood layers away from bacteria, fungi and parasites. It's the resin.

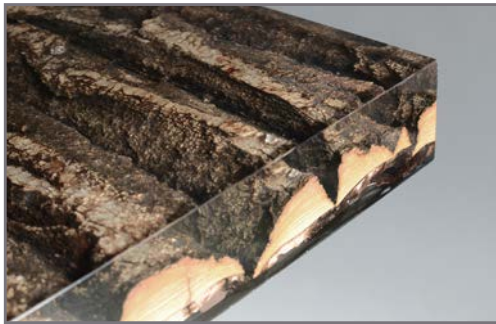
In a similar way, alcarol preserves the bark of different species covering them with an innovative bio-sourced transparent resin, functional declination of the tree's natural process.

This flat and clear layer allows you to appreciate the intact botanical variety of the organic matter, frozen as it appears in its original habitat.

The interlocking compositions refer to the ancient wood inlay technique, which has always sought the most different woods to get the maximum expressive possibilities. Now alcarol takes advantage of the incredible bark variety – also within the same species of trees – with a greater and unexpected potential.



PHELLEM_ Console



Dimensions:

48 x 238 x H 90 cm / *Custom Sizes Available*

Materials and finishes:

*Poplar BARK ,
Extraclear Epoxy RESIN
Formulation 34% bio-sourced,
Burnished STEEL Base*



PHELLEM_ Low table



Dimensions:

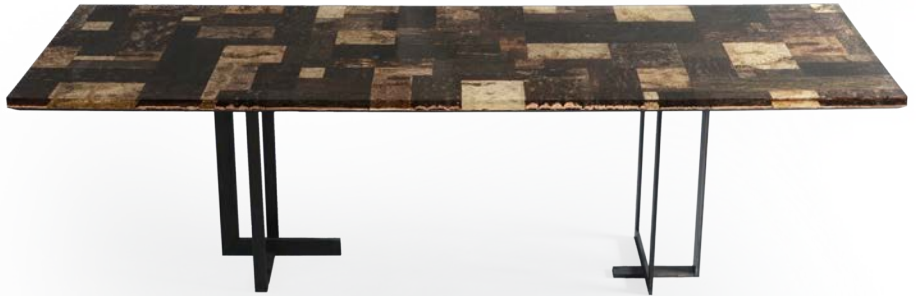
110 x 90 x H 44 cm / Custom
Sizes Available

Materials and finishes:

Oak, Larch and Birch BARKS
-various types and species- ,
Extraclear Epoxy RESIN
Formulation 34% bio-sourced,
Burnished STEEL Base



PHELLEM_ Dining table



Dimensions:

260 x 95 x H 75 cm / Custom
Sizes Available

Materials and finishes:

*BARKS -various types and
species- ,*

Extraclear Epoxy RESIN

*Formulation 34% bio-sourced,
Burnished STEEL Base*



PHELLEM_ Chess side table



Dimensions:

50 x 70 x H 64 cm / Custom
Sizes Available

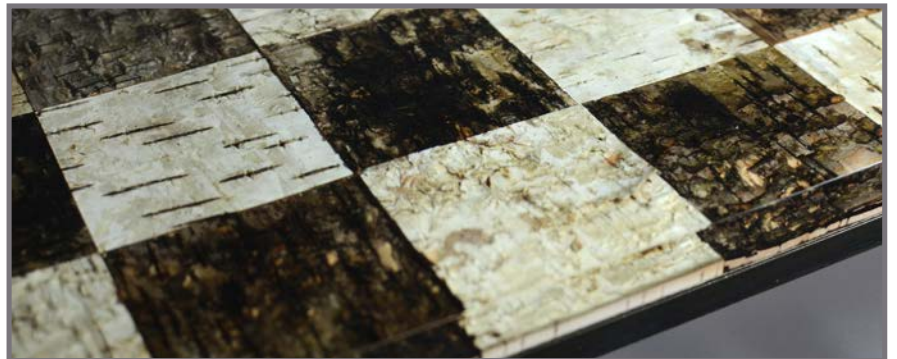
Materials and finishes:

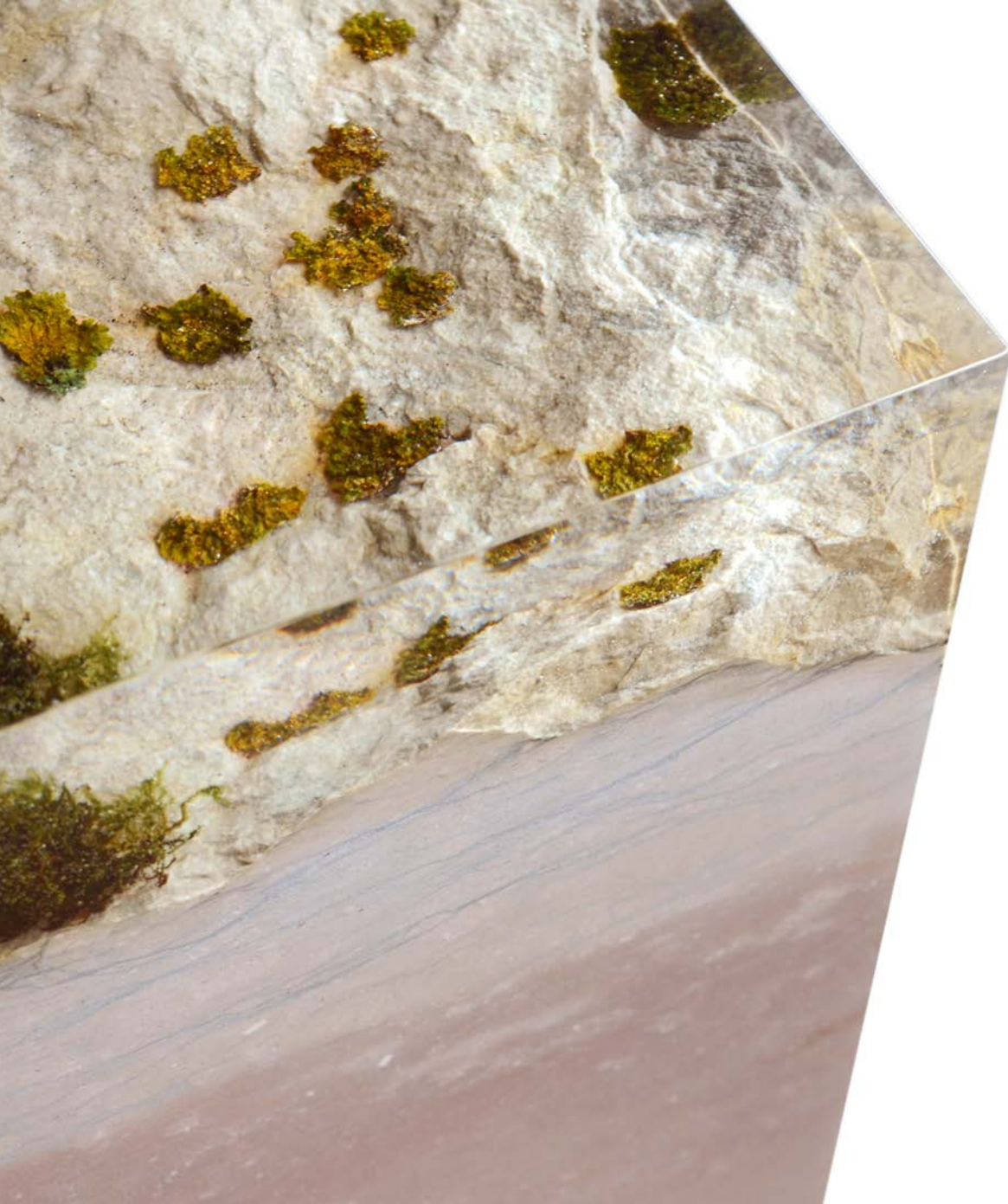
*Birch BARKS -various types and
species- ,*

Extraclear Epoxy RESIN

Formulation 34% bio-sourced,

Burnished STEEL Base





BEDROCK
COLLECTION

RAPOLANO_ Low Table



Dimensions:

70 x 95 x H 28 cm

Materials and finishes:

Rapolano's TRAVERTINE,
Extraclear Polished RESIN,
Burnished STEEL Base.

During the Pliocene epoch, about three million years ago, those who had observed the landscape from the top of the Chianti hills, would have seen an arm of the sea, about thirty kilometers wide, extend towards South-East for at least 80 Km.

A similar physiographic situation strongly influenced the constitution of the territory, forming that sea basin that acted as a formidable area of recall and accumulation of sediments carried by the water, unloading the fragments of rocks in the sea.

Then with the progressive withdrawal of the sea from the region it was determined the overlap of rock bodies in the typical stratigraphy of clays, sandstones and conglomerates, whose deposits – however – remained influenced by the oscillations of the sea level, which, although for relatively short periods, he again came back to invade the land, alternating environments of lagoon, beach, and shallow sea.

RAPOLANO_ Stool/side table



Dimensions:

30 x 30 h. 45 cm

Materials and finishes:

Rapolano's TRAVERTINE,
Extraclear Polished RESIN, FELT
hidden at the bottom.

The subsequent erosive phenomena, mainly due to water and wind, further contributed to depict that piece of land with the appearance of a petrified stormy sea.

The Italian town of Rapolano in the Sienese lands has been known since the ancient Romans who went there to take the thermal baths in its hot springs.

alcarol -in collaboration with Vaselli- retrieved pieces of eroded Rapolano Travertine rock and has preserved its cavities marked by time using a transparent resin resembling the water in which these rocks lay submerged through various eras.

DOLOMYTH_ Stool/side table

Dolomylth aims to capture the complex relief of the Dolomites, which is rich in forms and the result of a successful and harmonious combination of structural shapes and climatic conditions. This unique and dynamic landscape is in constant geomorphological evolution, starting from the Miocene period, when rock layers began to emerge from the sea in which they had sedimented.

alcarol retrieved blocks of local stone from an abandoned quarry. This stone is partially covered with native mosses and lichens giving it a surface that captures the geographical maps of the Dolomite's mountains. In the vertical section planes are clearly visible the different layers of geological sedimentation, with shades ranging from antique pink to gray. The top surface of the blocks is the rough and wrinkled natural surface of the rock, unsanded and not worked by man. alcarol has preserved this "skin" marked by time using a resin resembling the water in which these stones lay submerged through various geological eras, freezing the present instant and endowing the blocks with new functionality and new design.



Dimensions:

30 x 30 x H 45 cm

Materials and finishes:

Dolomite ROCK, Extraclear Polished
RESIN, FELT hidden at the bottom

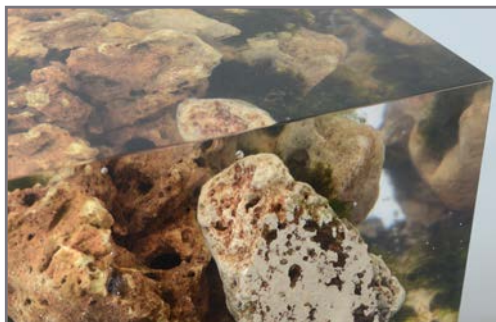
DOLOMYTH_Vase



Dimensions:
7 x 7 x H 32 cm

Materials and finishes:
Dolomite ROCK, Extraclear Polished RESIN,
GLASS container hidden at the top,
FELT hidden at the bottom

KARST_ Stool/side table



Dimensions:

30 x 30 h. 45 cm

Materials and finishes:

Karst stone, Mosses, Extraclear Polished RESIN,
Swivel CASTORS or FELT hidden at the bottom.

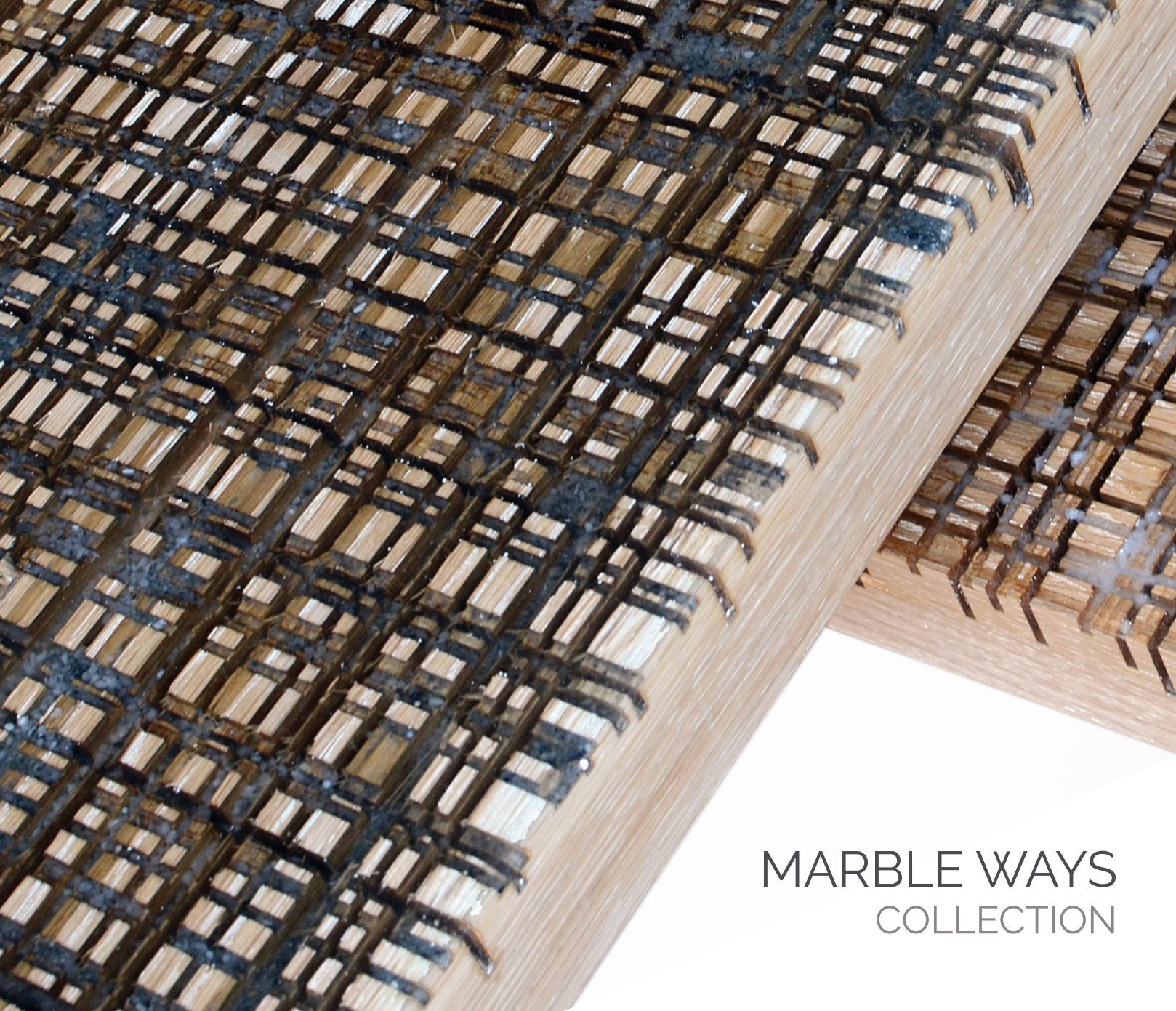


Karst is a distinctive landscape shaped by the dissolving action of water on soluble rocks like the famous Dolomite's mountains, Unesco World Heritage.

The development of karst occurs whenever acidic water starts to break down the surface of bedrock near its cracks.

The geological process, occurring over many thousands of years, results in unusual surface and subsurface features ranging from sinkholes, vertical shafts, disappearing streams and springs, to complex underground drainage systems and caves allowing for rapid and often turbulent water flow. alcarol retrieved pieces of local karst stone partially covered with native mosses and lichens, and has preserved this skin marked by time using a transparent resin resembling the water in which these stones lay submerged through various erosion eras.

The section planes reveal the amazing shapes and cavities generated by the water, freezing the present instant and endowing the blocks with a new and eternal functionality.



MARBLE WAYS
COLLECTION

The worktops of Italian quarries and marble processing labs consist of wood planks which are continuously scratched by huge circular blades used to cut blocks of stone. Repeated cuts produce also powdered and granulated marble that – through the water used to cool the steel blades – is deposited between the myriad slits on the wood, creating a kind of unusual and irregular checkerboard similar to an urban planning model of a future metropolis, with crossroads, squares, buildings and uncountable ways.

Once consumed by the blades, these wooden planks are replaced and become waste. The collection draws inspiration from this timber so rich in history and wants to give it a second life. Each piece is unique and characterized by the type of marble that was worked on it during the last cuts, in fact the sedimentary powder unites colours of natural stone with those of wood.

Like the water flow of the cutting operations, a transparent resin is poured on the uneven wood surface to encapsulate marble residues and level all the roughness, freezing time preserving the materials from degrading agents. A poetic license which also allows us to obtain an excellent and durable functionality. In line with the history of the materials used, the metal basis of these pieces are inspired by the blades used for cutting stones, made of laser cut sheet steel and assembled by simple joints. alcarol always seeks to identify the spirit and the essence of a place to obtain an unordinary understanding: in this new collection, the result of the various processes is a flat and functional surface that allows the preservation and the appreciation of the history of this characteristic pattern, result of countless human workings. The pattern of this collection transcend the ordinary perception of these workplaces: the surfaced old wood wants to be touched, and the transparency of the resin in the grooves invites to explore and lead through the marble ways.



MARBLE WAYS_ Dining table



Dimensions:

240 x 100 h. 75 cm

Wide customization opportunities

Materials and finishes:

Solid wood, marble powder, epoxy resin, sheet steel base.

MARBLE WAYS_ Coffee table

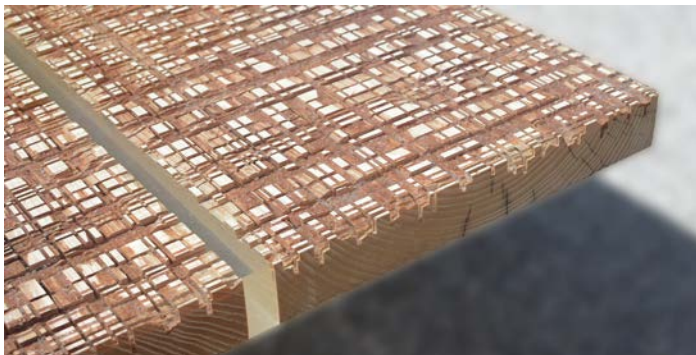


Dimensions:
100 x 70 x h. 42 cm.

Wide customization opportunities

Materials and finishes:
Solid wood, marble powder, epoxy resin,
sheet steel base.

MARBLE WAYS_ Low table



Dimensions:

120 x 55 x h. 25 cm.

Wide customization opportunities

Materials and finishes:

Solid wood, marble powder, epoxy resin, sheet steel base.

alcarol

via Nongole , 200
Belluno - ITALY

info@alcarol.com

ph. +34 04371848610
+39 380 7252536
+39 340 6117154